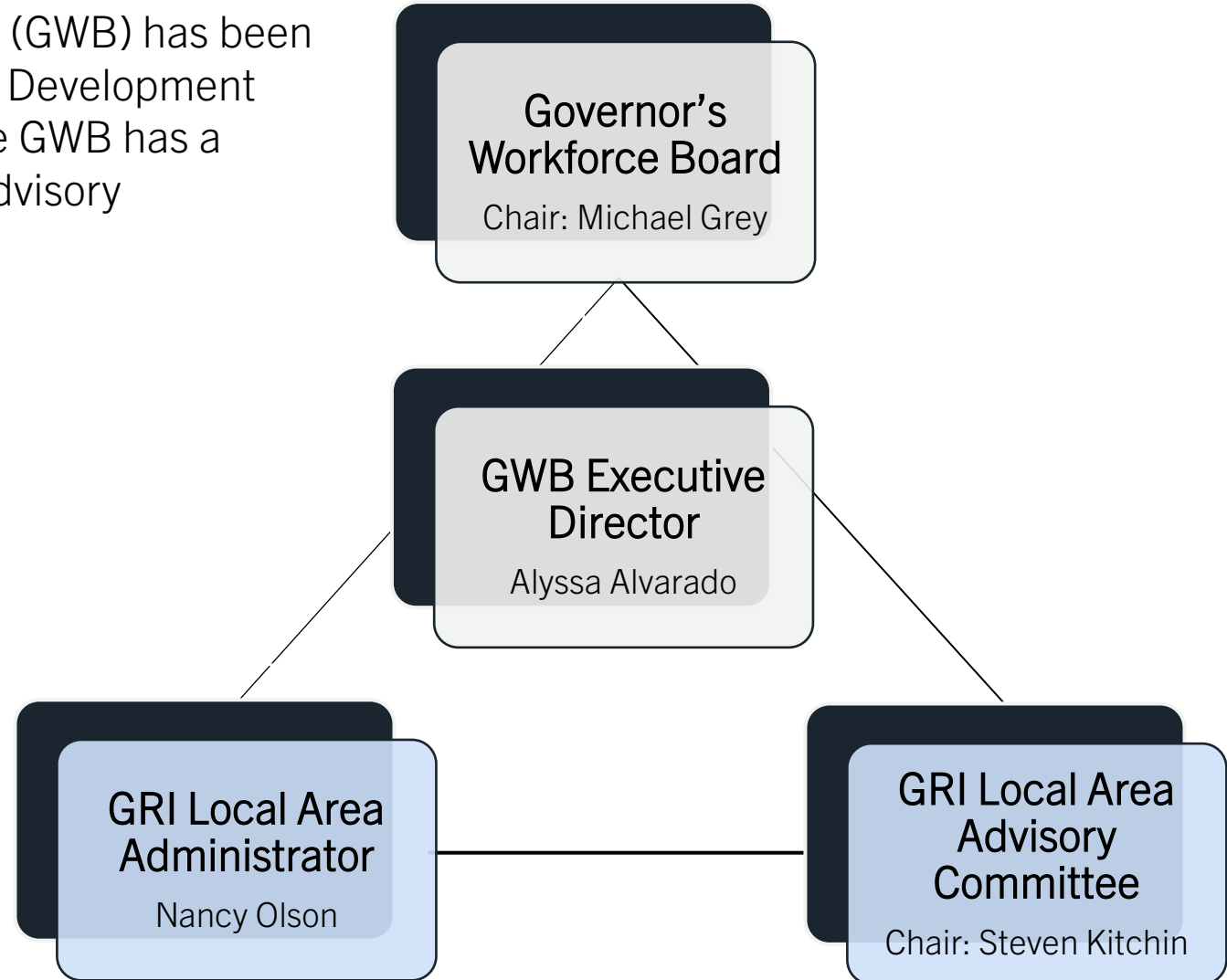


GWB's Management of the GRI Local Area

Since 2019, the Governor's Workforce Board (GWB) has been fulfilling the functions of the Local Workforce Development Board for the Greater Rhode Island Area. The GWB has a Local Area Administrator and a Local Area Advisory Committee to help support this work.



GRI Local Area Service Delivery

GWB Executive Director, Alyssa Alvarado

GRI Local Area Administrator, Nancy Olson



Title I

Workforce Development for Adults, Dislocated Workers & Youth
RI Department of Labor & Training
Division of Workforce Development
-Sarah Bramblet-



Title II

Adult Education & Literacy
RI Department of Education
Office of College & Career Readiness (Adult Education)
-Sophie Tan-



Title III

Wagner-Peyser Services
RI Department of Labor & Training
Division of Workforce Development
-Sarah Bramblet-



Title IV

Vocational Rehabilitation
RI Department of Human Services
Office of Rehabilitative Services
-Joseph Murphy-



TANF

Temporary Assistance to Needy Families
RI Department of Human Services
-Kim Rauch-



Other Partners

RI Works
Tri-County Community Action
CCAP
Cumberland Housing
RI Indian Council
Exeter Job Corps
Youth Build

